

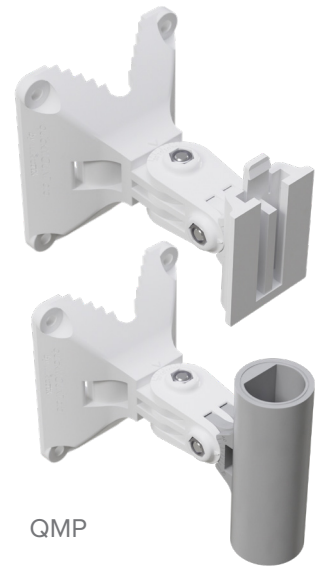
quickMOUNT pro

The quickMOUNT pro is an advanced wall or pole mount adapter for small point to point and sector antennas.

The quickMOUNT pro gives possibility to turn antenna within 140° both in horizontal and vertical plane. With the quickMOUNT pro it is possible to perfectly set antenna alignment using integrated graduated scale.

- It's simple and low cost
- Adjustable horizontally and vertically
- Wall or pole mountable
- Two models available, one for SXT, OmniTik, BaseBox or any other pole mountable device via the included adapter. A special model is also available for LHG

The quickMOUNT is very durable due to it's special plastic composite material - anvilNITE (TM).



QMP



QMP-LHG

Specifications

Product code	QMP / QMP-LHG
Dimensions	95x88x112mm, 74x81mm (mounting hole pattern)
Tube diameter	35 mm
Max tube diameter to which mount can be attached	65 mm
Maximum antenna weight	1.5 kg
Maximum wind load	100 N
Turn angle for MikroTik products	140°
Compatible devices	QMP: SXT, OmniTik, other antennas that are designed to be pole mounted QMP-LHG: LHG 5
Material	anvilNITE™

Includes



4X 6x30mm wall anchor



4X Self tapping screw



4X M6x20 button head screw (only QM-LHG)



4X M6 locking nut (only QM-LHG)



50-70mm hose clamp